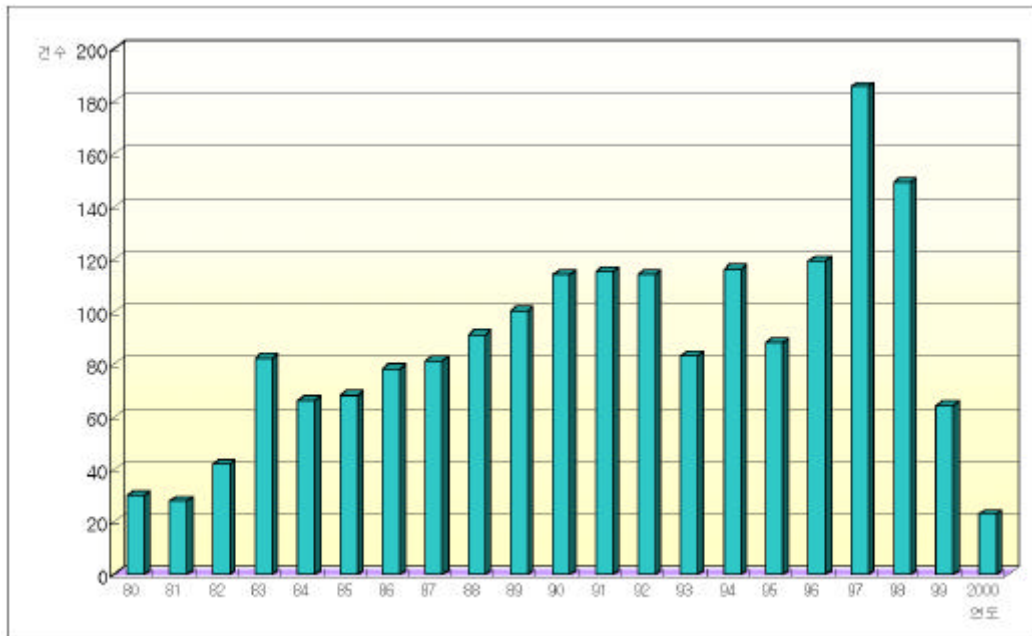


4 .

4- 1 .

4 - 1- 1 .

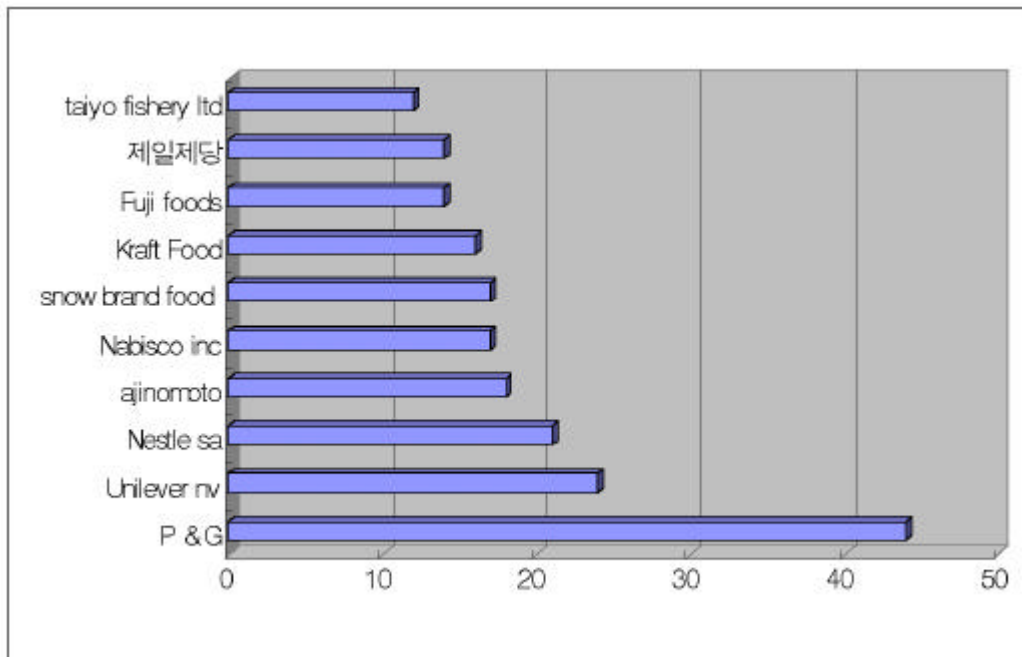
1980 , 가
가 1989
가
1994
가 가 가 .



4-48 .

4-1-2.

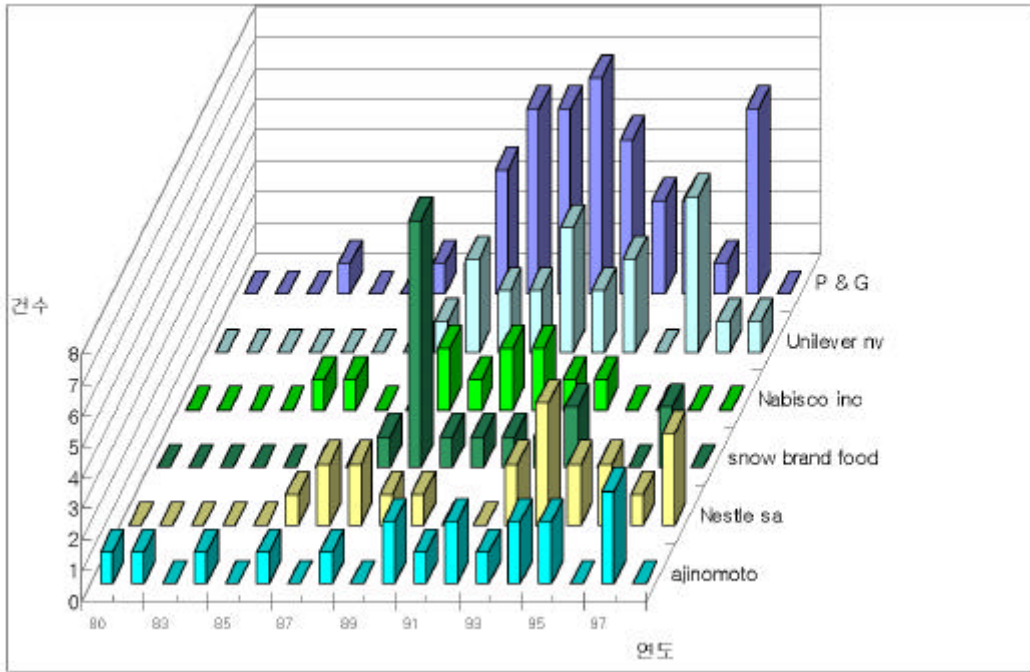
가 1,146 10
 가 197 1.6 12
 가 .



	P & G	Unilever nv	Nestle sa	Ajinomoto	Nabisco inc	Snow brand food	Kraft Food	Fuji foods		Taiyo fishery ltd	
	44	24	21	18	17	17	16	14	14	12	197
	44	24	21	18	17	17	16	14	14	12	197

4-49.

10



4-50.

6

4-1-3.

가

가

1/2

가

1/2

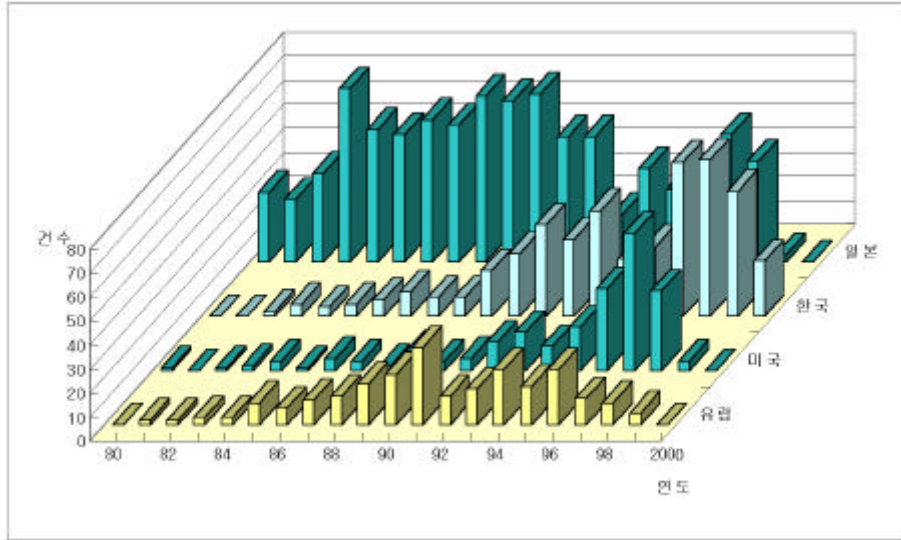
1/4

가

가

가

.

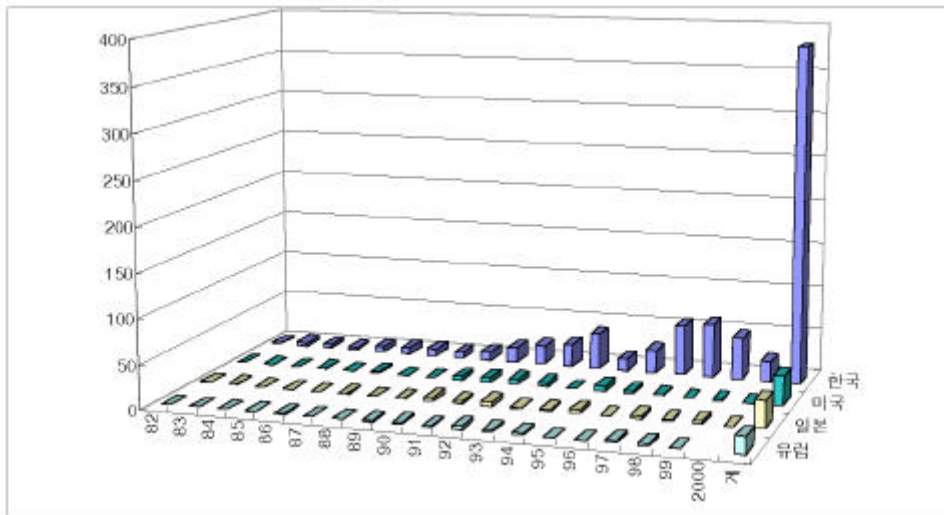


4-51. 가

4-1-4.

4-1-4-1.

가 , , 82% .

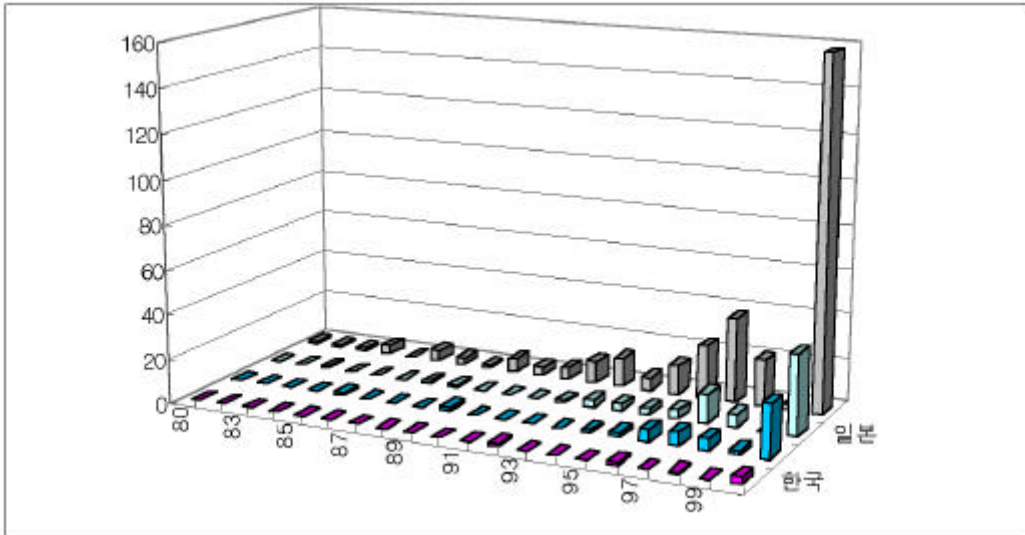


4-52.

4- 1- 4- 2 .

가 , 가

74% .



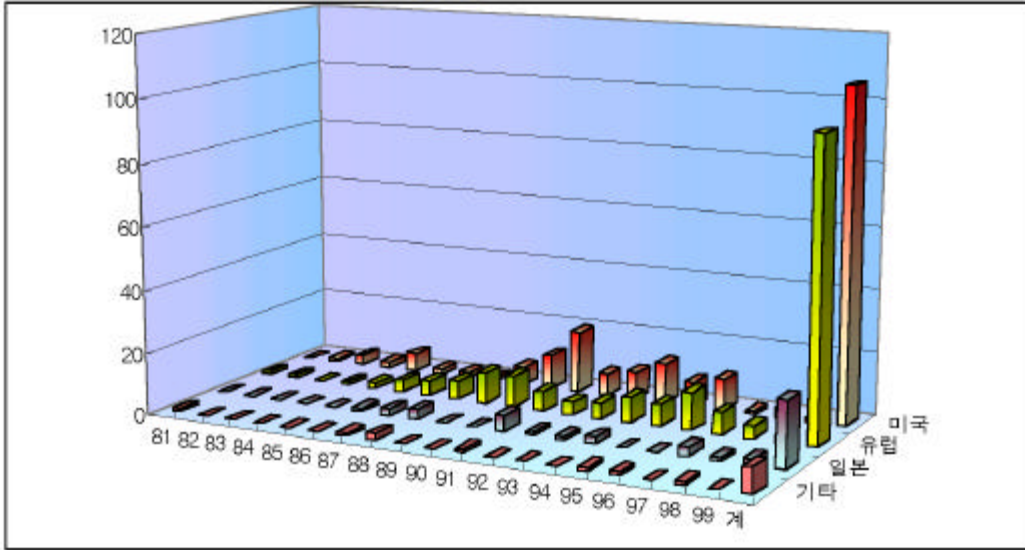
4- 53 .

4- 1- 4- 3 .

가 가

가 30% .

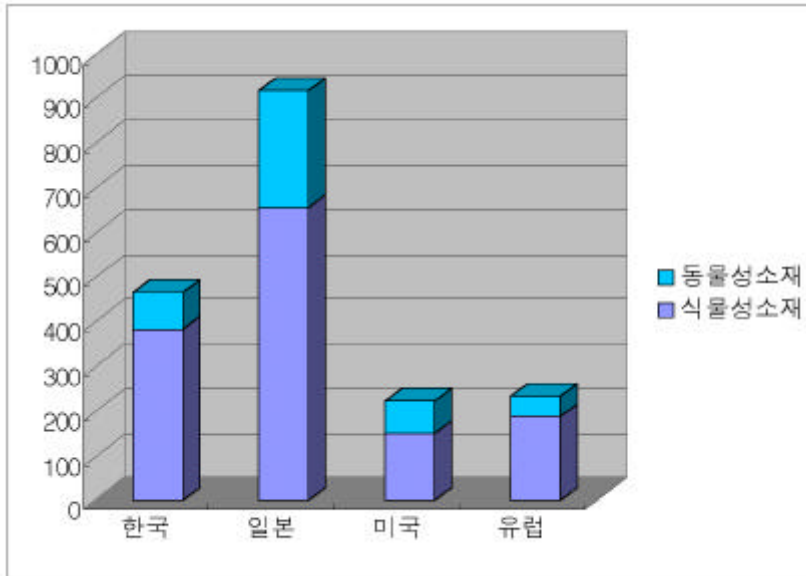
가 가 .



4-54.

4-2.

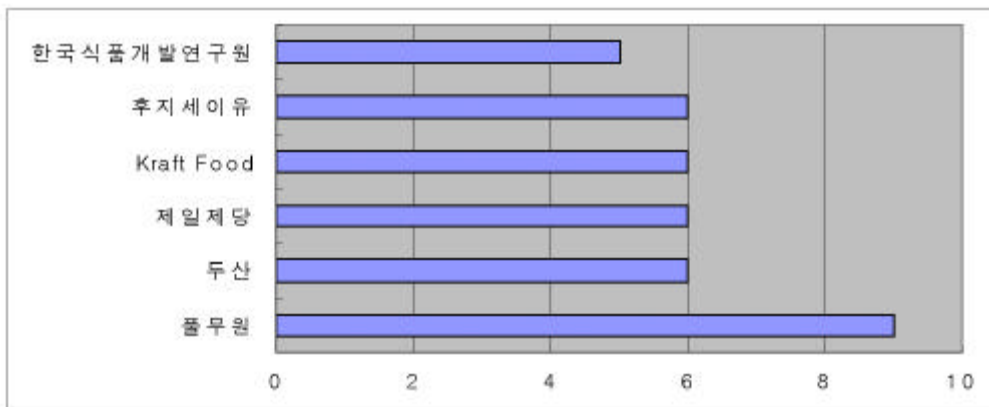
/
 , ,
 가 . 가
 가 가 ,
 가 가 가



4-55. 가

40%

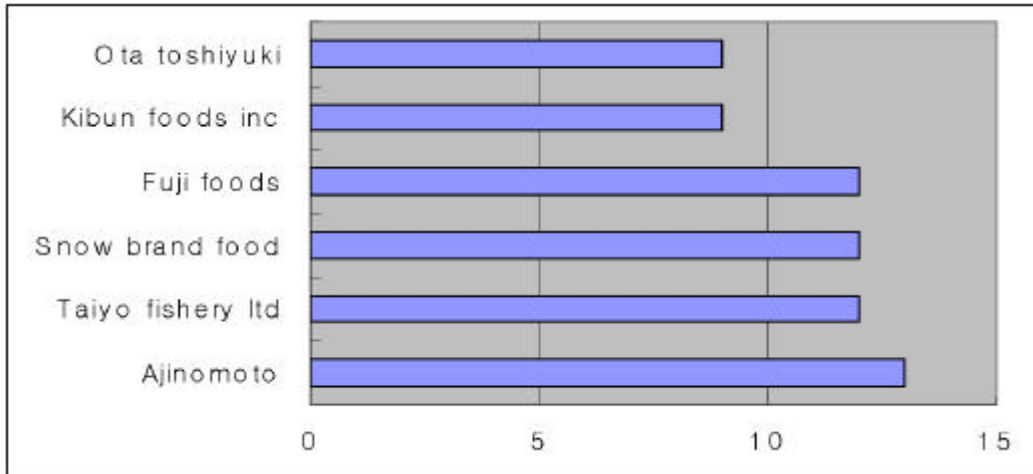
가



4-56.

1980

가



4-57.

(魚油)

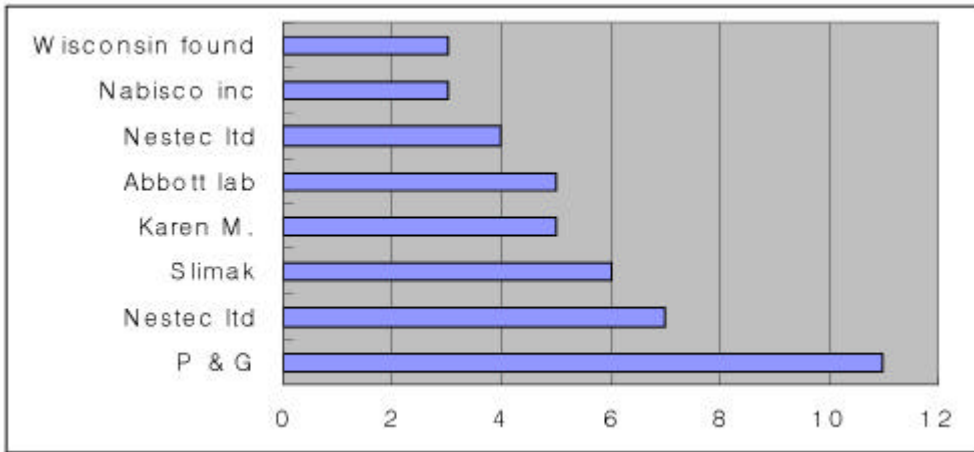
가 가

(phytochemicals)

가

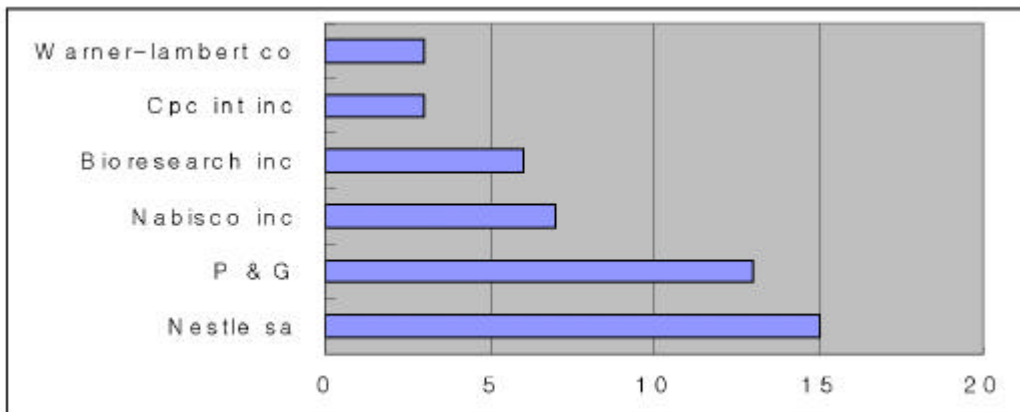
가

가 가



4-58.

, , , ,
 , P&G ,



4-59.

가 가

가

가

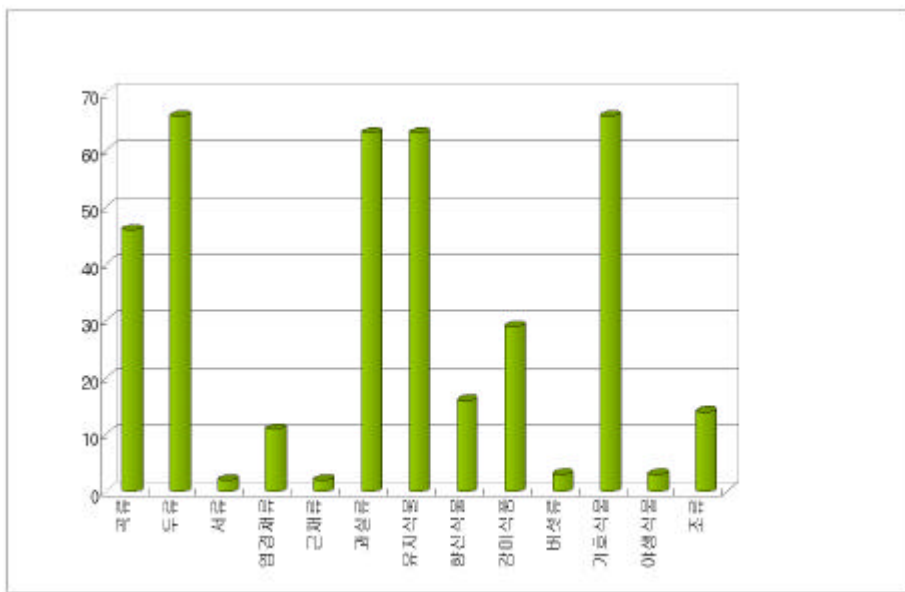
4-3.

4-3-1.

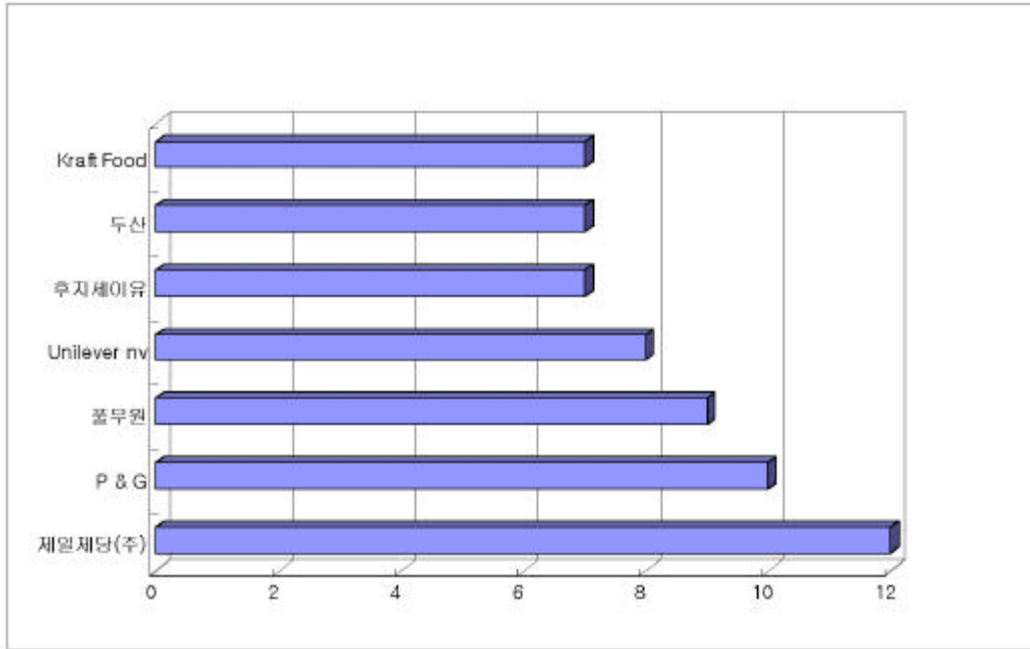
4-3-1-1.

P&G,

가



±x 4-60.



4-61.

, ,
.

,

가

,

1990

, ,
가

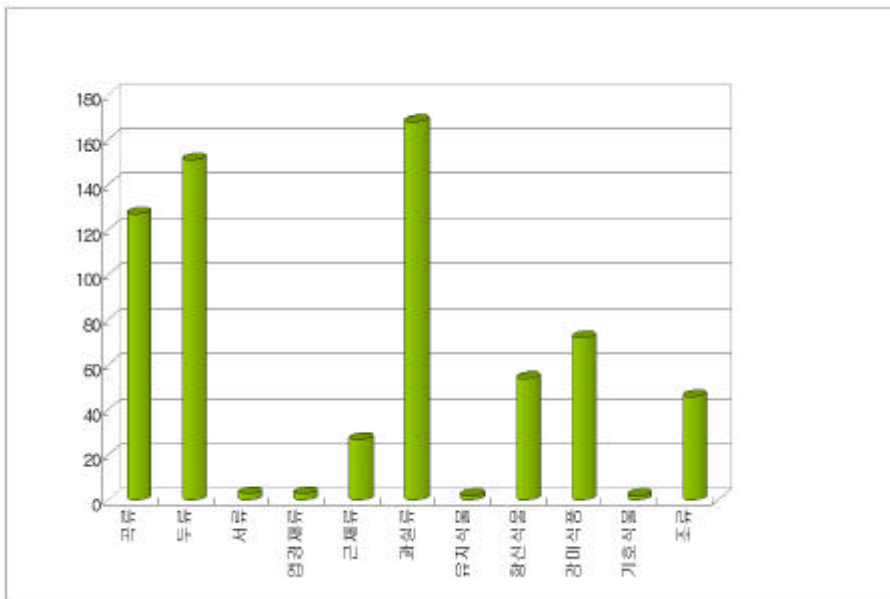
가

1984 ,
 가 .
 Serdary Research Laboratories 1993 Biotechnology
 (Green Tea Extract)
 가 .

4-3-1-2 .

, , ,
 , ,
 가 .
 Fuji Foods, Terumo corp., Ajinomoto .

, , 가 가
 가
 .



4-62 .

,

,

1980

, 가

가

1991

,

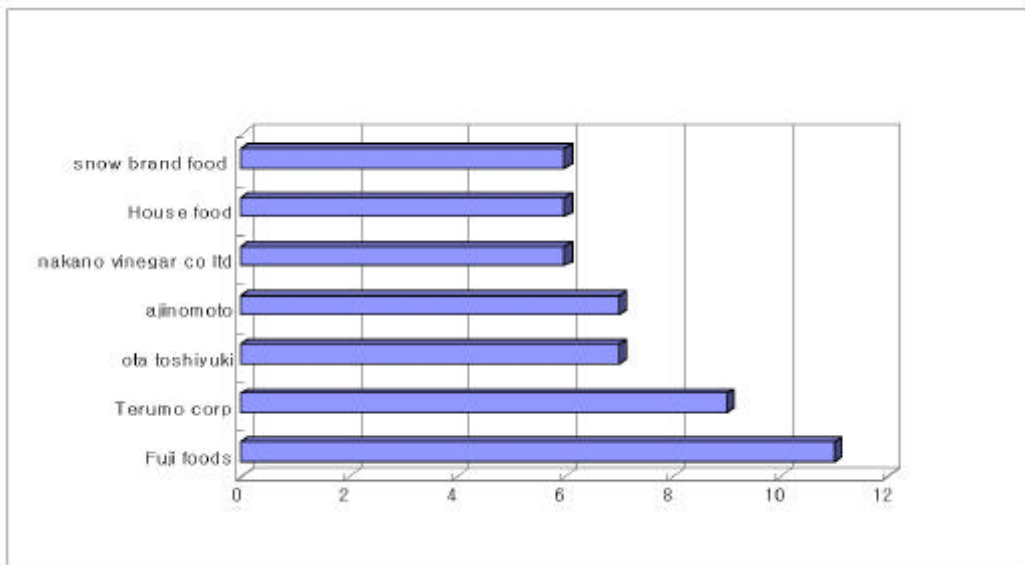
가

,

가

가

가



4-63.

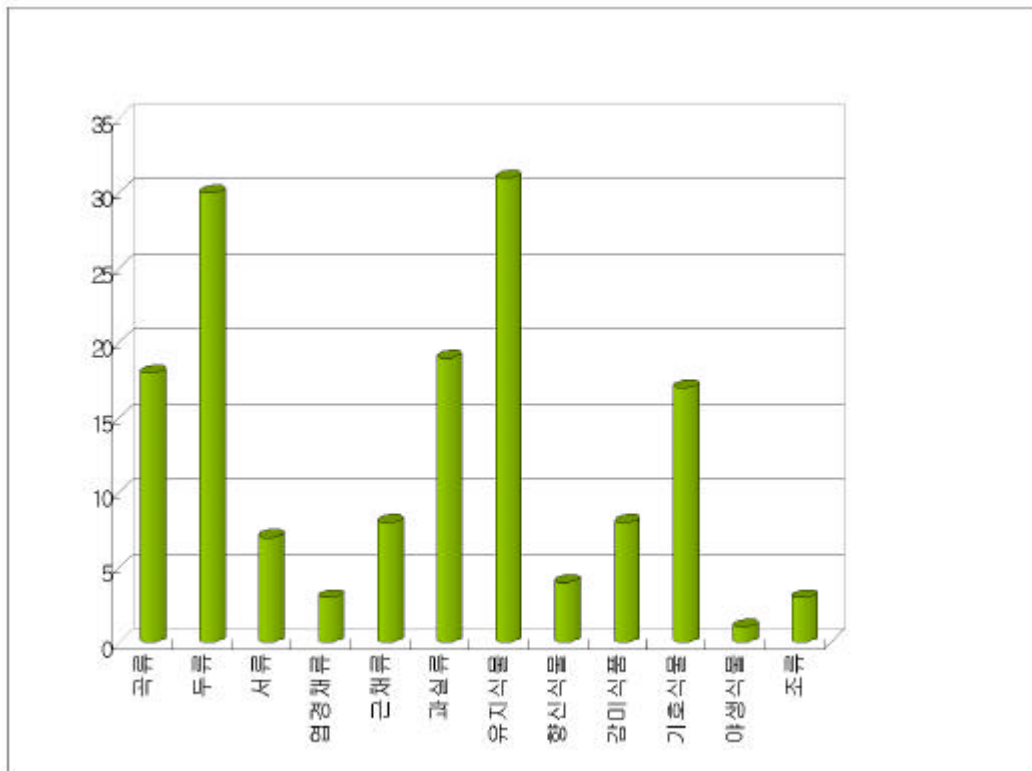
,

,

4-3-1-3.

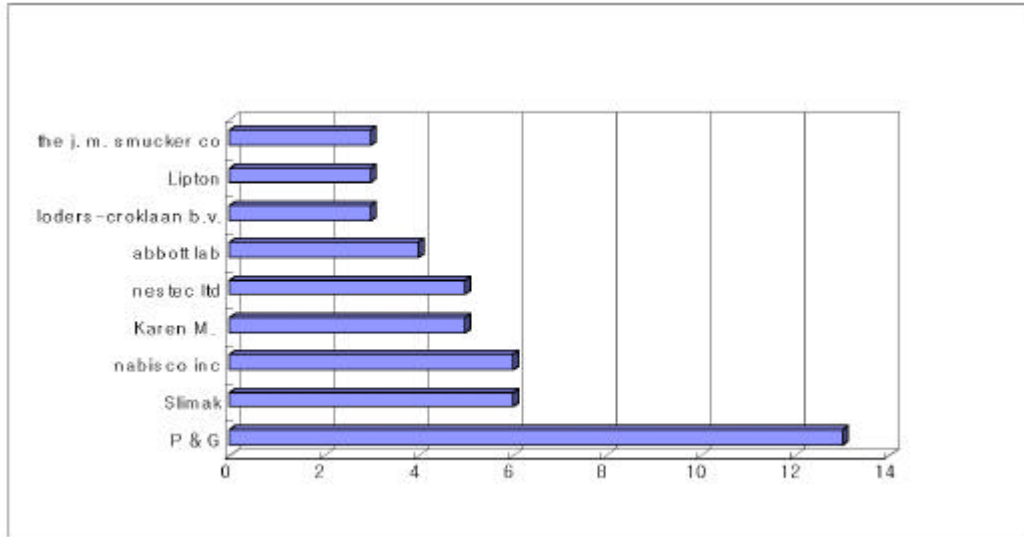
가 가

가 가



4-64.

P&G,

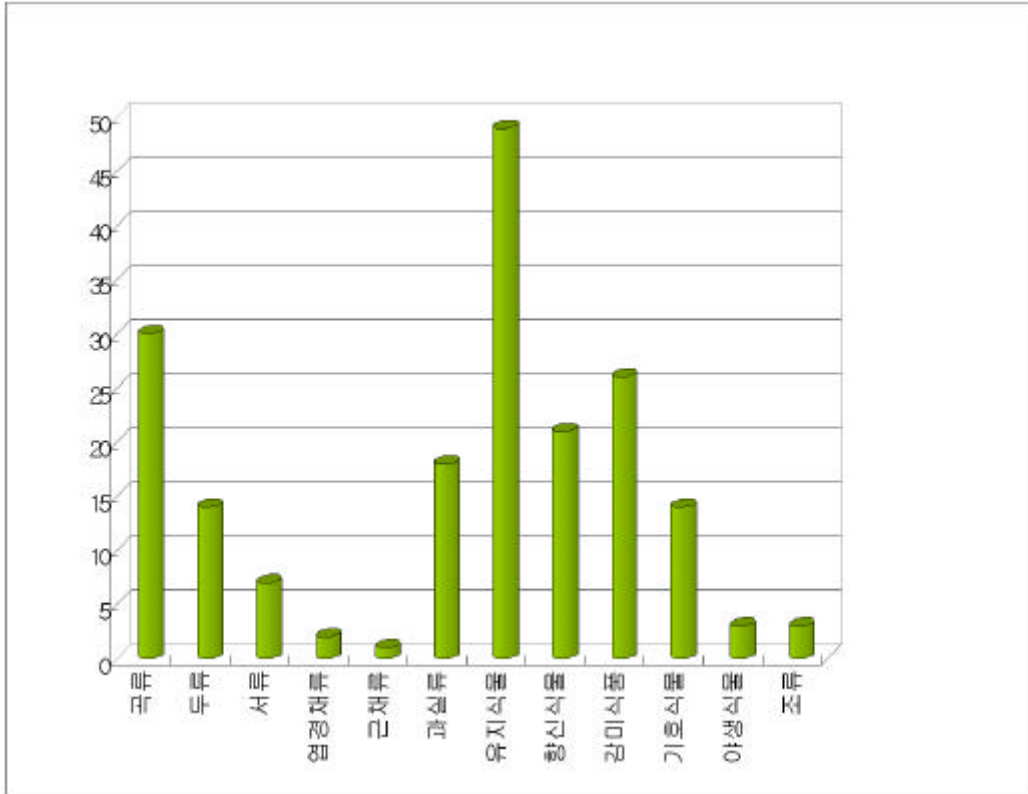


4-65.

가
가 1994
가 FMC
(, , ,)
가
. 1994
가 가 가 . P&G ,

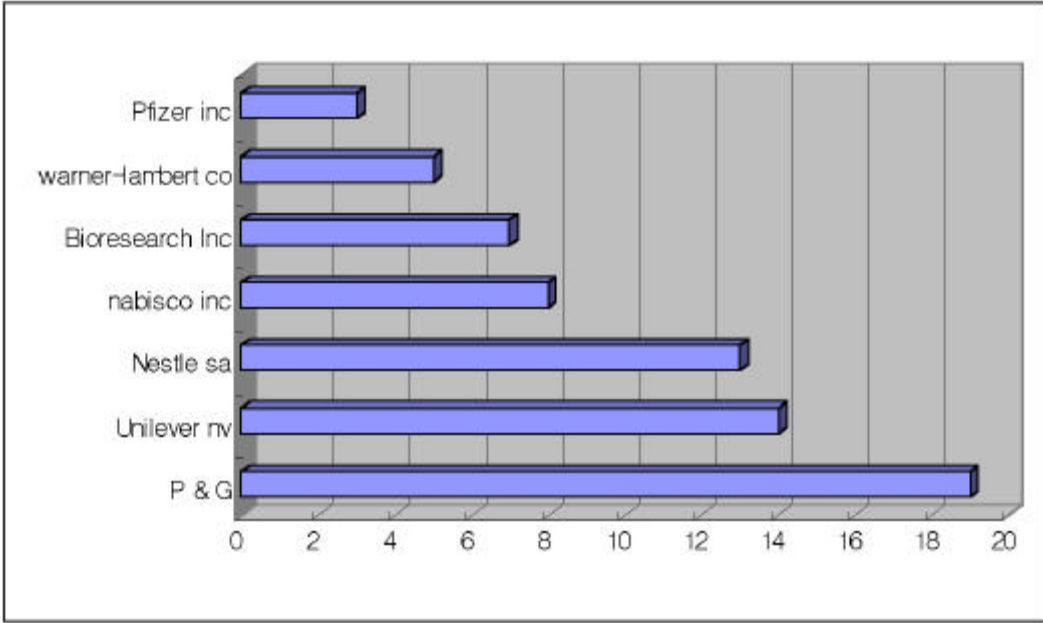
4-3-1-4.

가 가
가



4-66.

P&G, 가



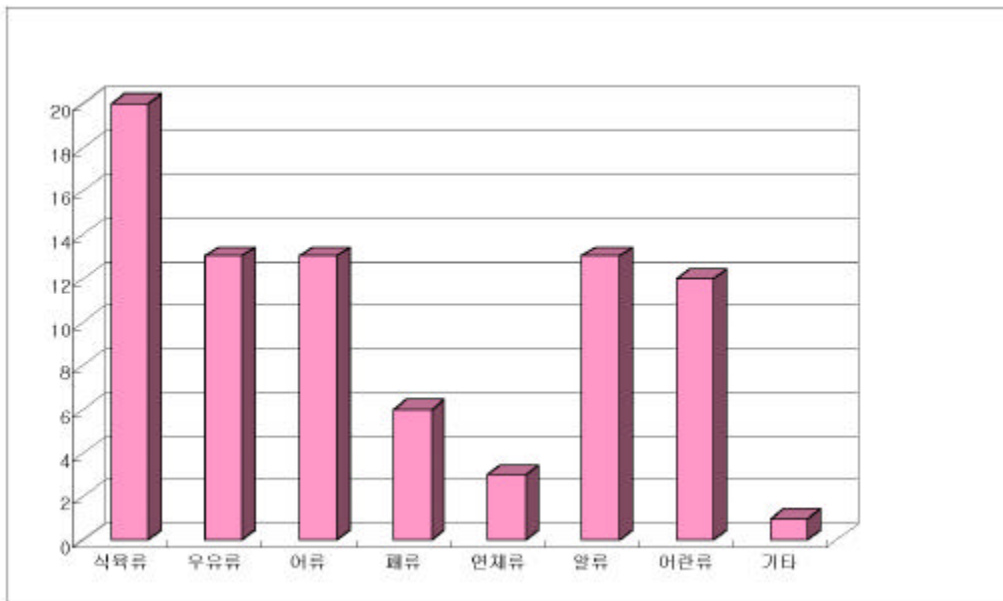
4-67.

가
 . / 가 가 가 가
 가 가 가 가
 . 가
 P&G ,
 1/4 가 .

4-3-2.

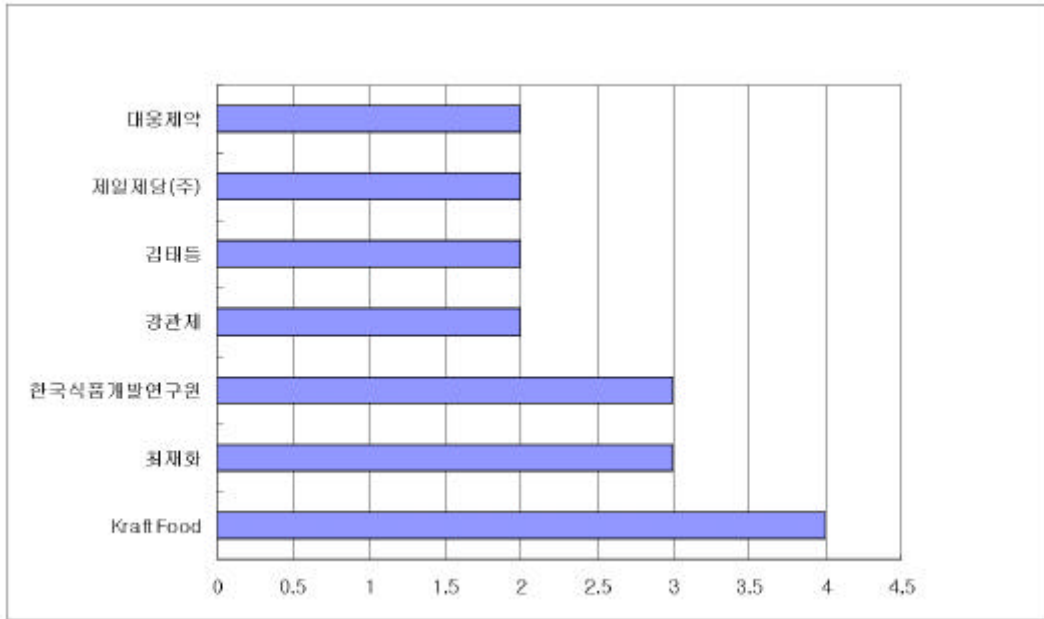
4-3-2-1.

가 , 가 , 가 .



4-68.

가 , 1990 , 1993 .

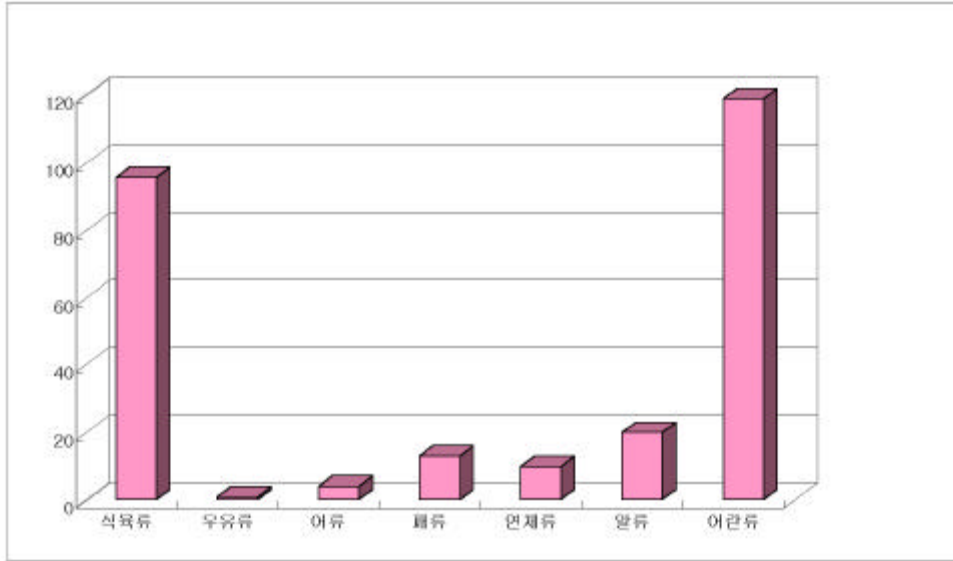


4-69.

4-3-2-2.

1980

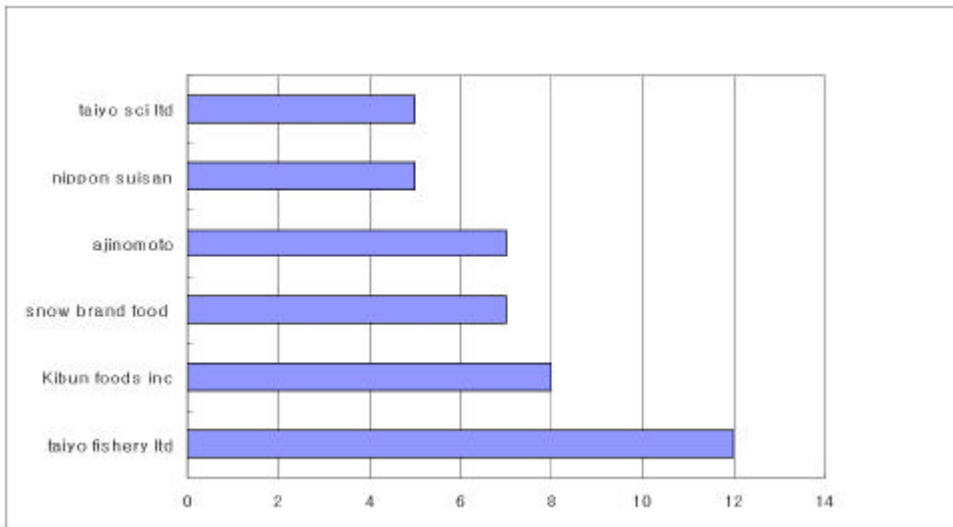
가 ,
 ,
 ,
 가 EPA, DHA , 가
 가



4-70.

EPA, DHA
 suisan) 太陽水産(Taiyo fishery)

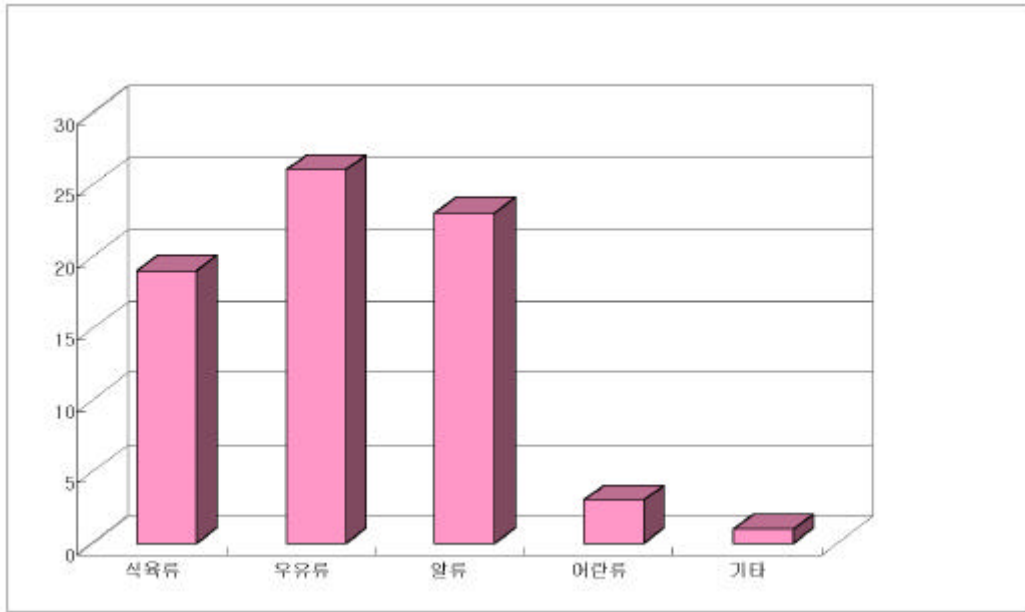
日本水産(Nippon



4-71.

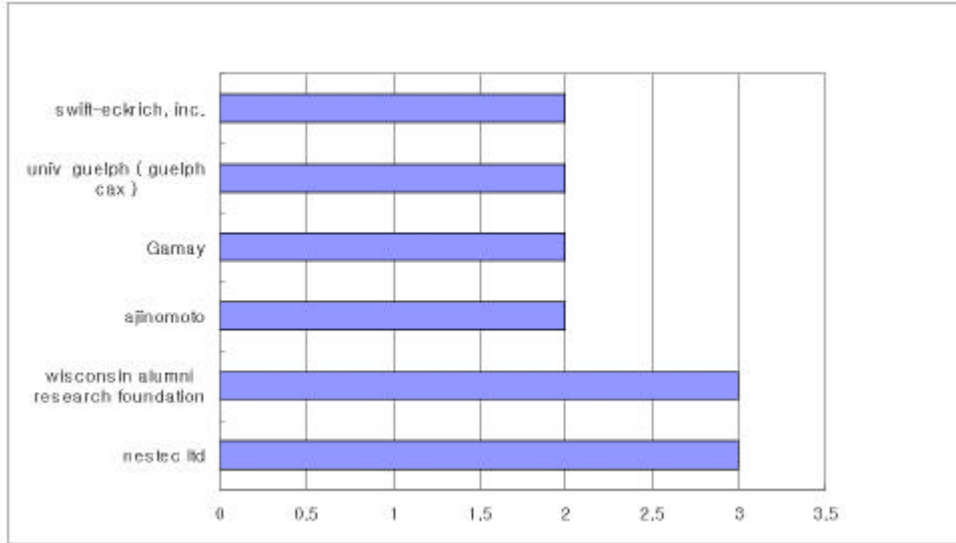
4-3-2-3.

가 가 가
가 .



4-72.

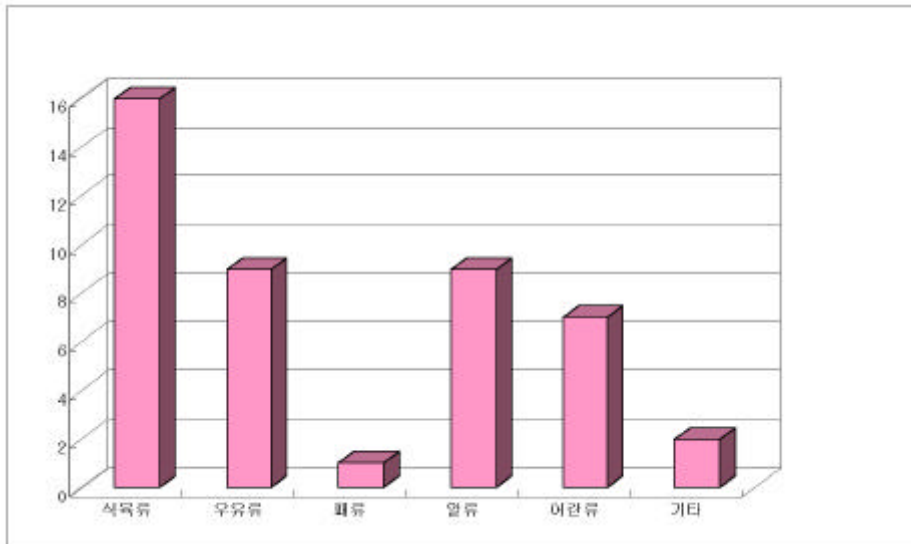
가 1/2 가 ,
가 .
1997
가 .



4-73.

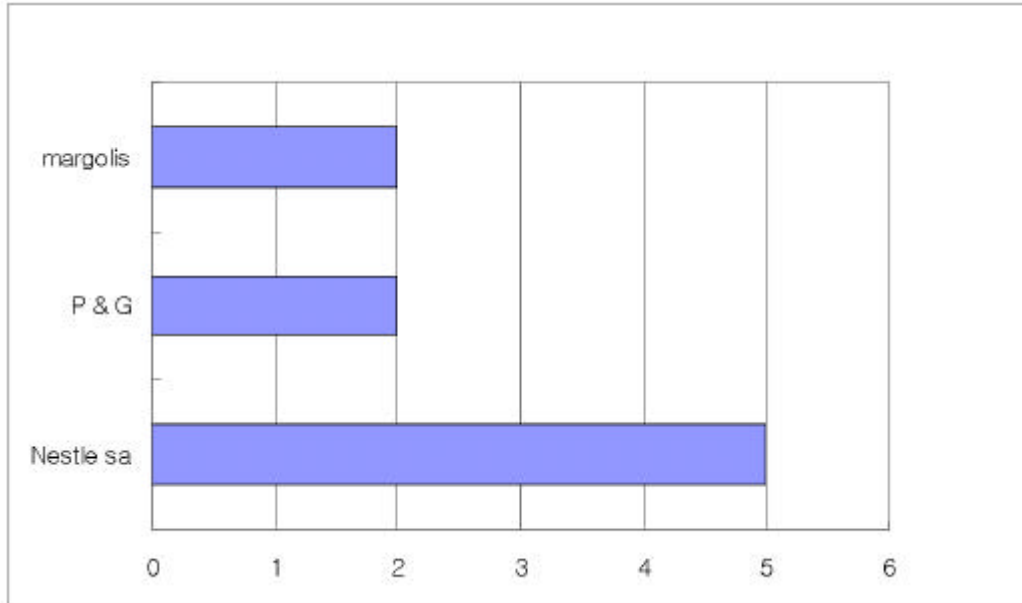
4-3-2-4.

가 .



4-74.

가
, P&G .



4-75.